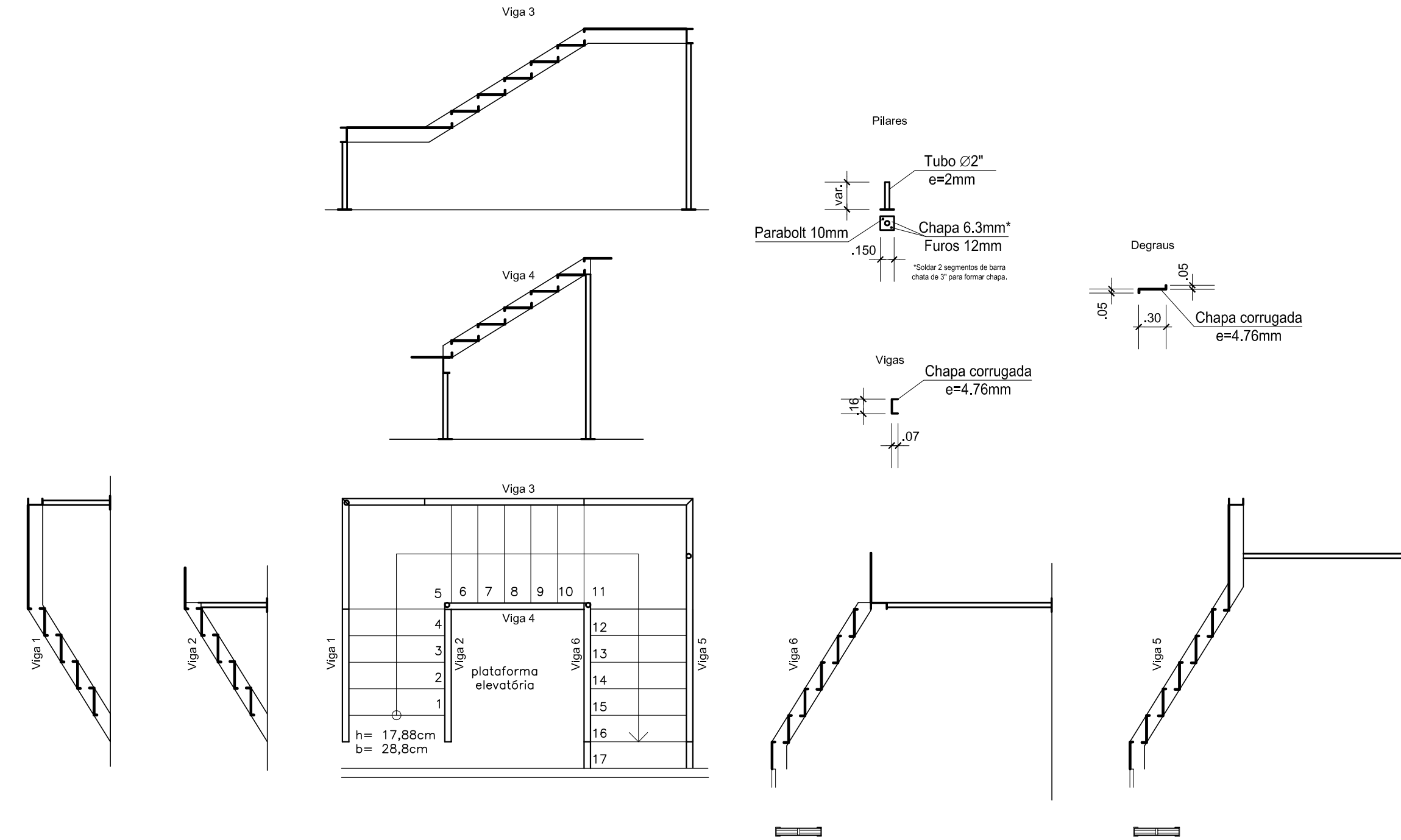
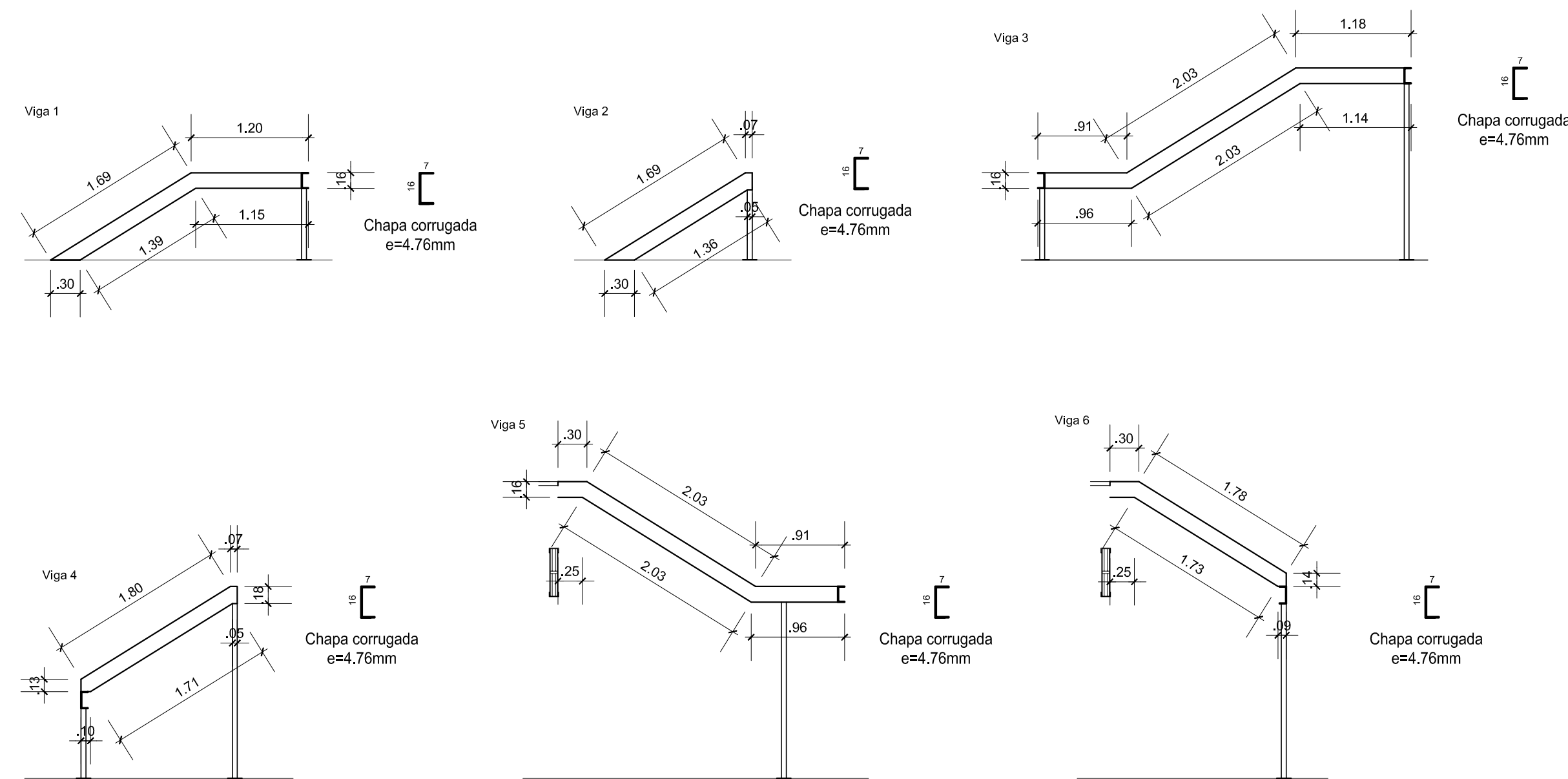


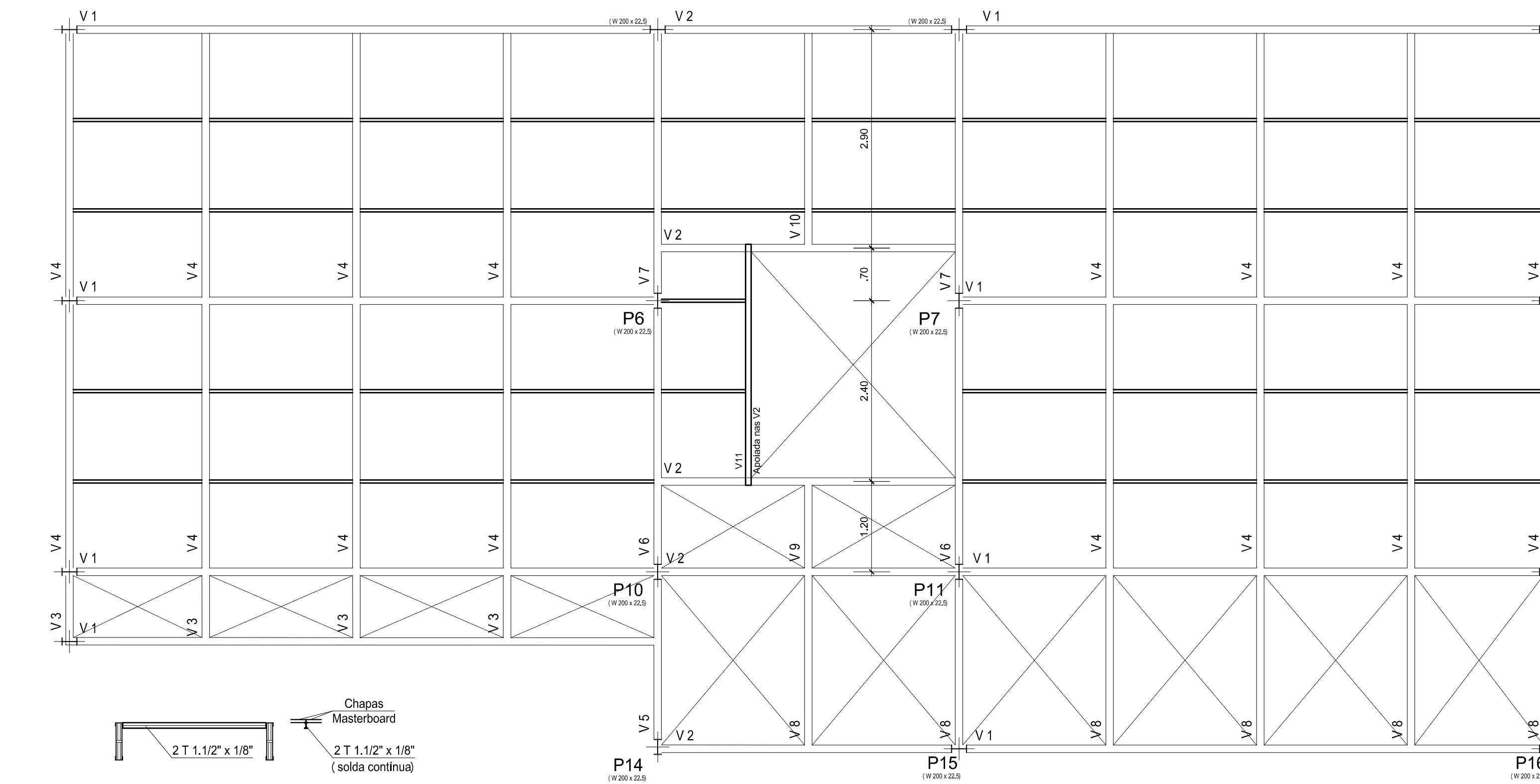
ESCADA - PLANTA E CORTES



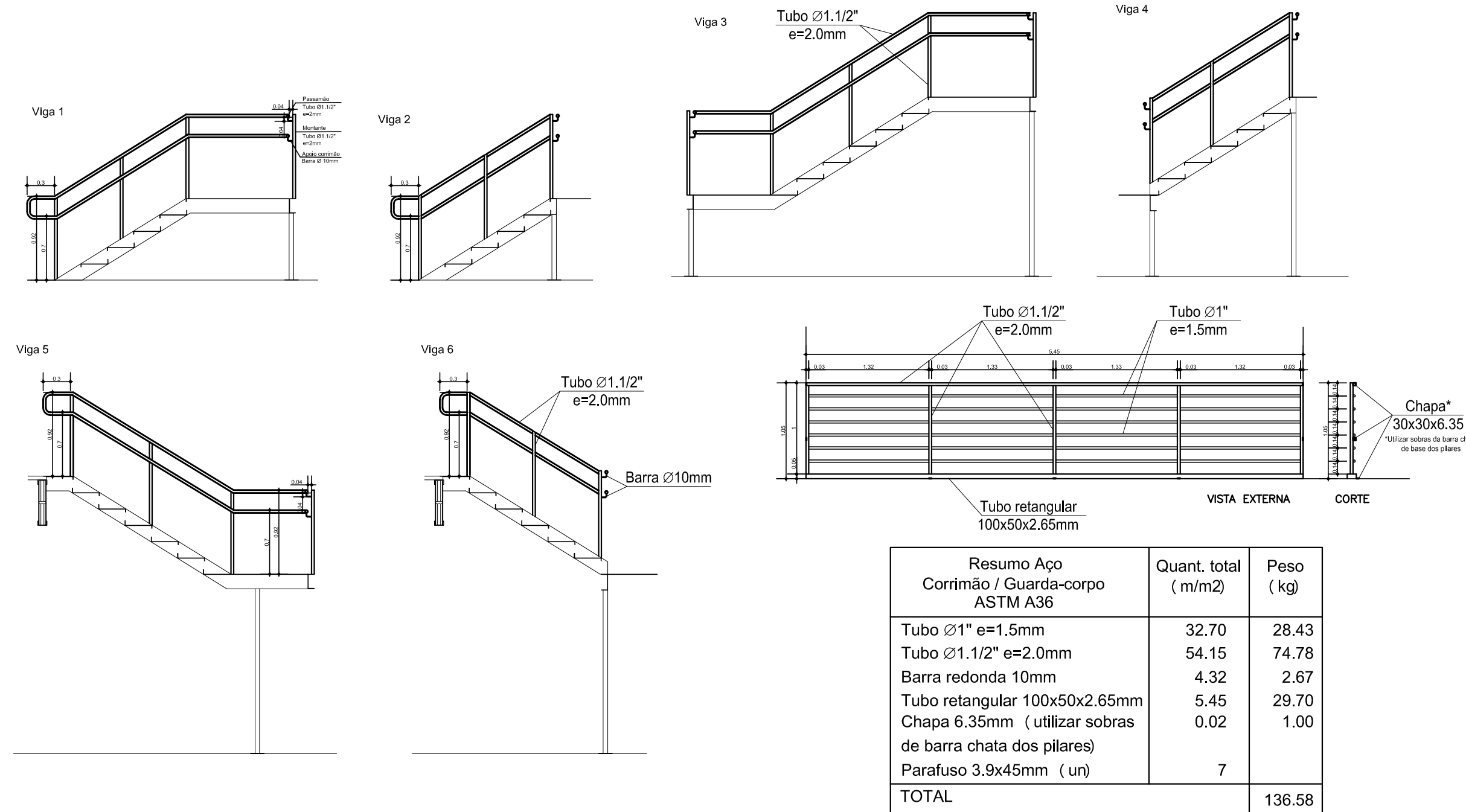
VIGAS DE CHAPA DOBRADA



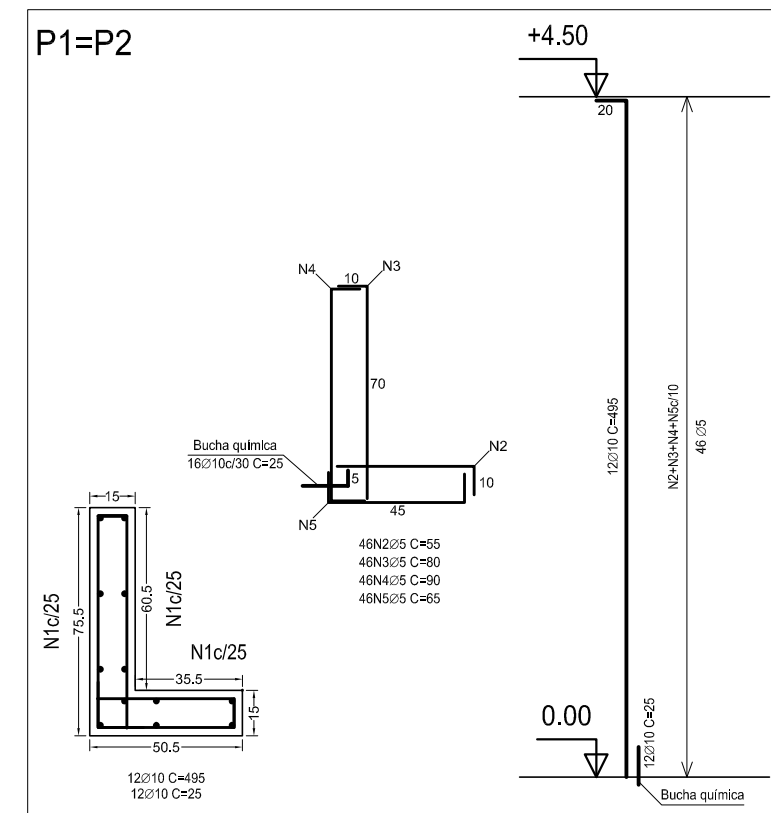
ASSOALHO - VIGAS DE REFORÇO



GUARDA-CORPO Ø1.1/2'

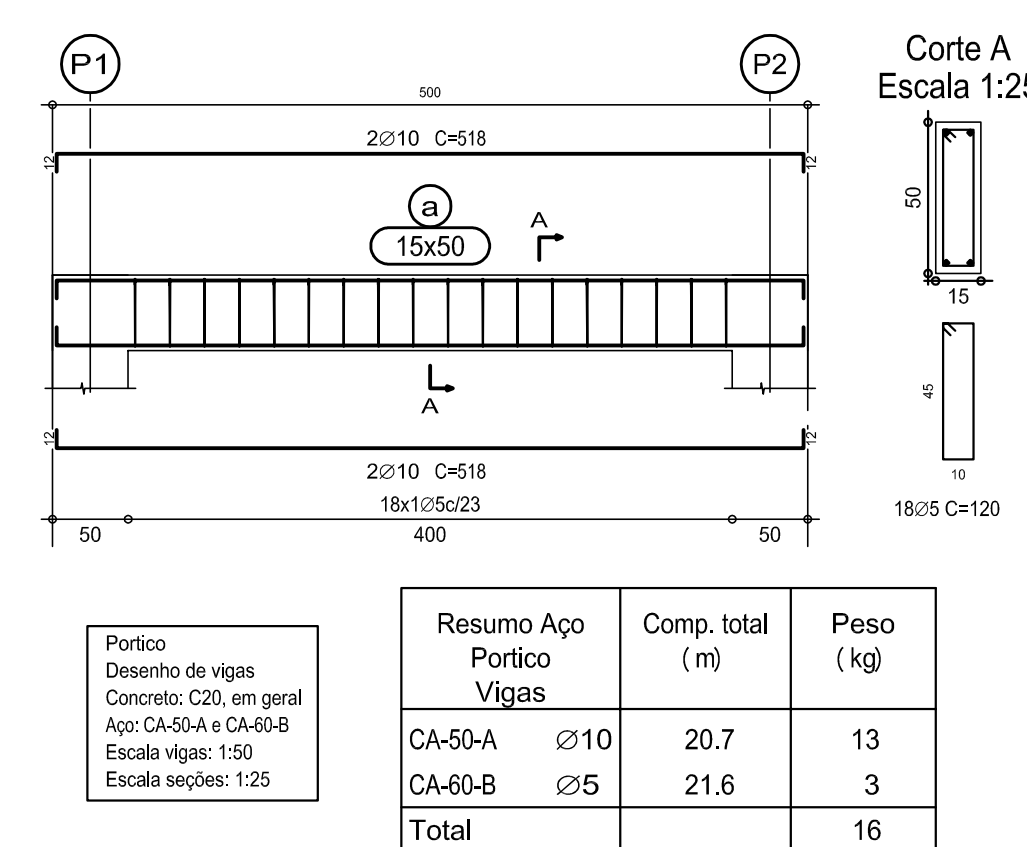


PÓRTICO

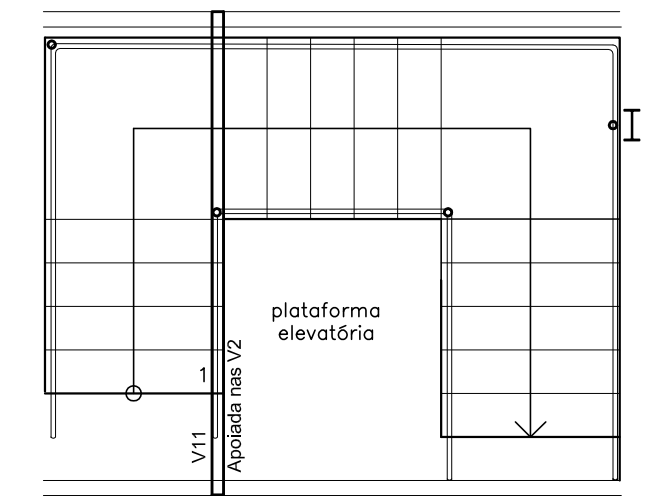
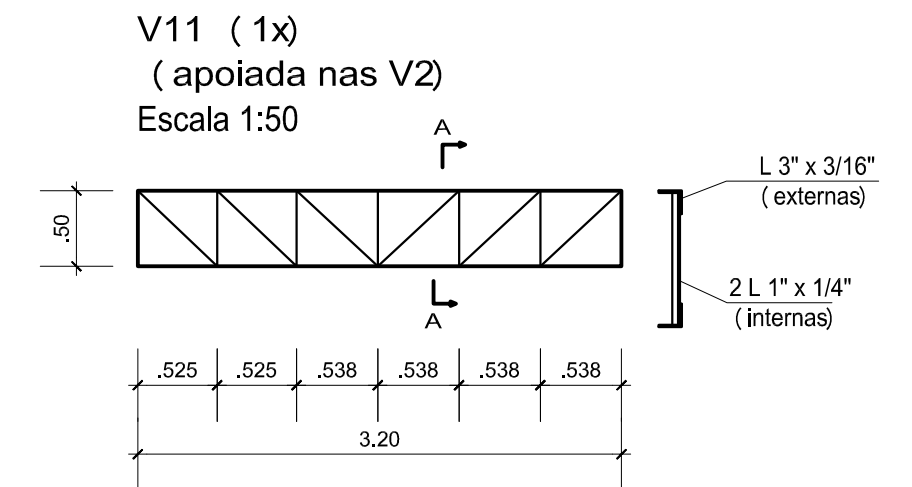
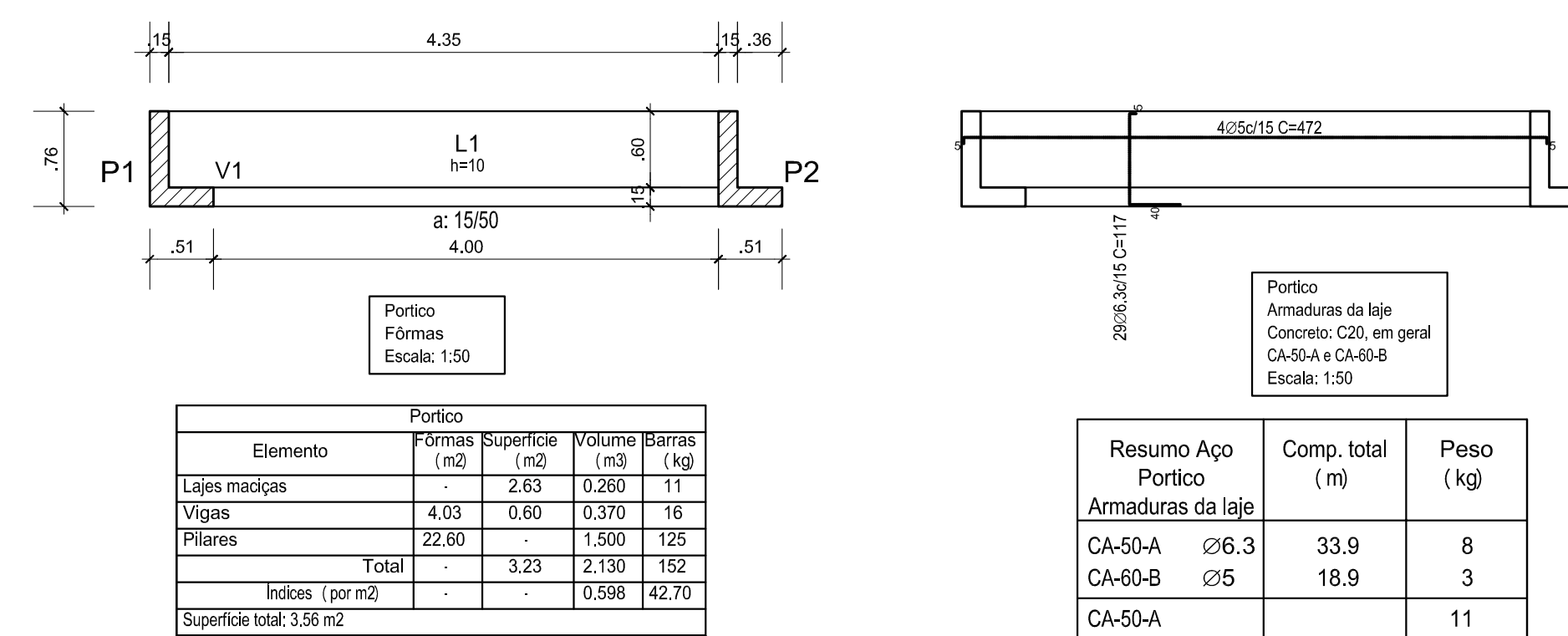


<p>Pilares que terminam em Portico</p> <p>Concreto: C20, em geral</p> <p>Apo: CA-50-A e CA-60-B</p> <p>Escala horizontal: 1:25</p> <p>Escala vertical: 1:50</p>		
Resumo Apo Portico	Comp. total (m)	Peso (kg)
Pilares-paredes		
CA-50-A Ø10	132.8	82
CA-60-B Ø5	276.0	43
Total		125

V1 PÓRTICO
Escala 1:50



PÓRTICO



Resumo Aço Estrutura da escada e viga ASTM A36	Quant. total (m/m2)	Peso (kg)
L 3" x 3/16"	7.40	40.85
T 1 1/2" x 1/8" (assoalho)	138.24	251.60
L 1" x 1/4"	6.85	15.21
Tubo Ø2" e=2mm	5.06	11.98
Chapa Lisa 6.3mm (utilizar 2 segmentos de barra chata)	0.09	4.49
Chapa corrugada 4.76mm	14.87	555.63
Parabolt 10mm (un)	8	
TOTAL		879.76

