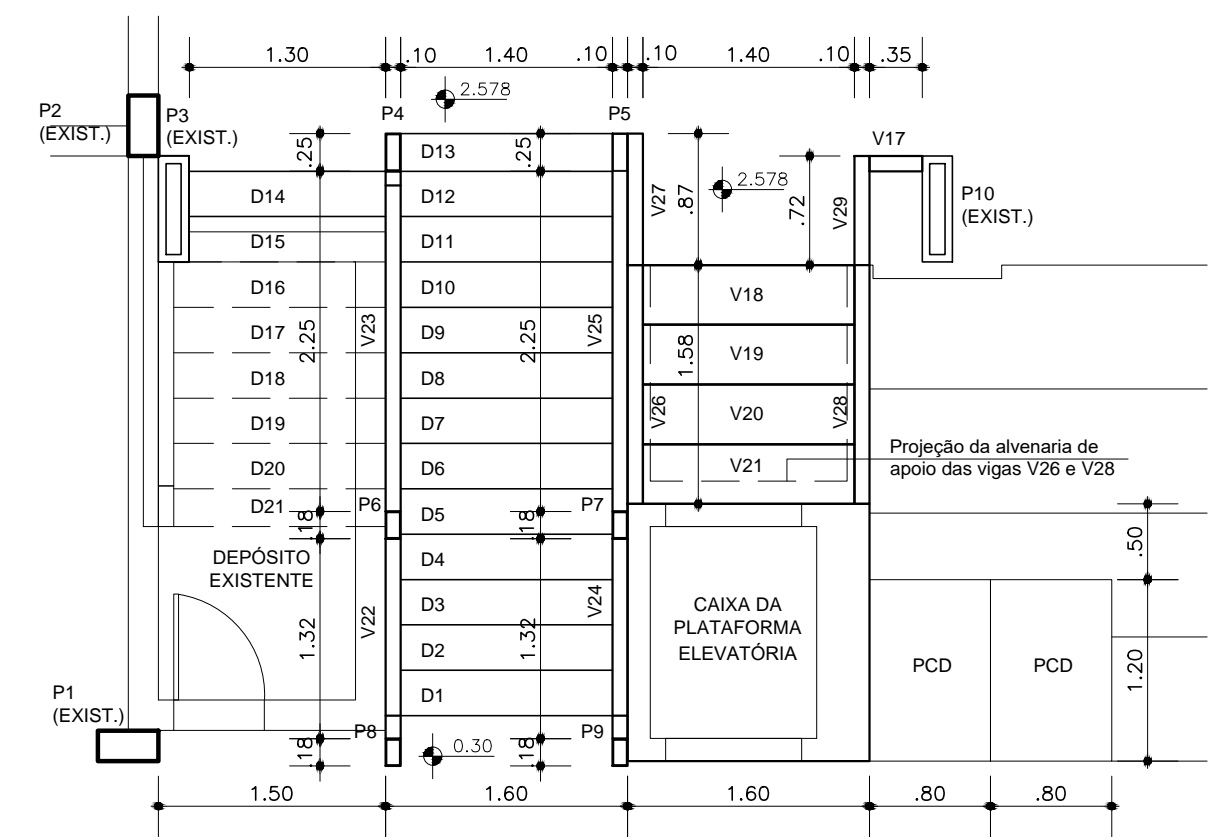
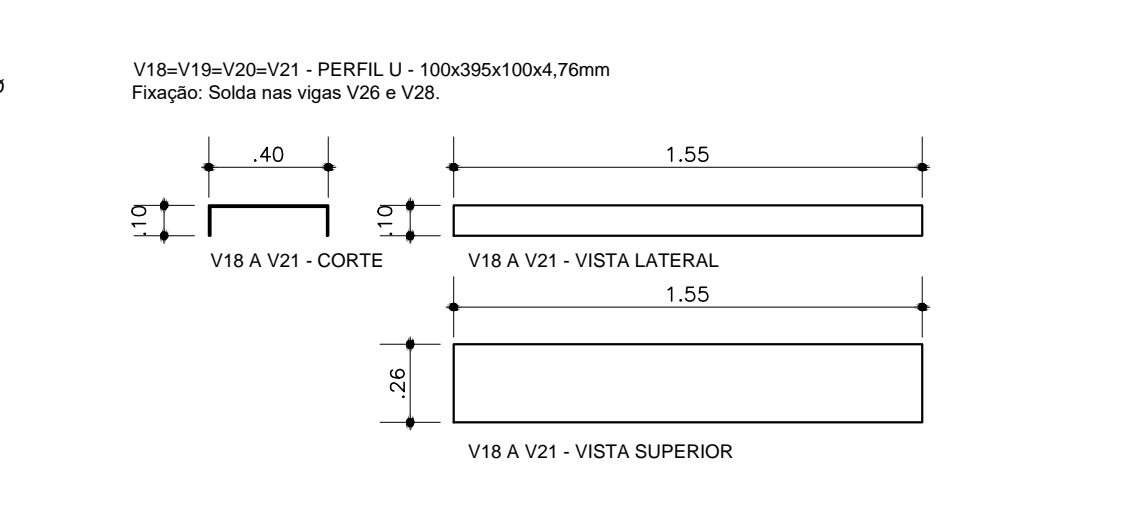
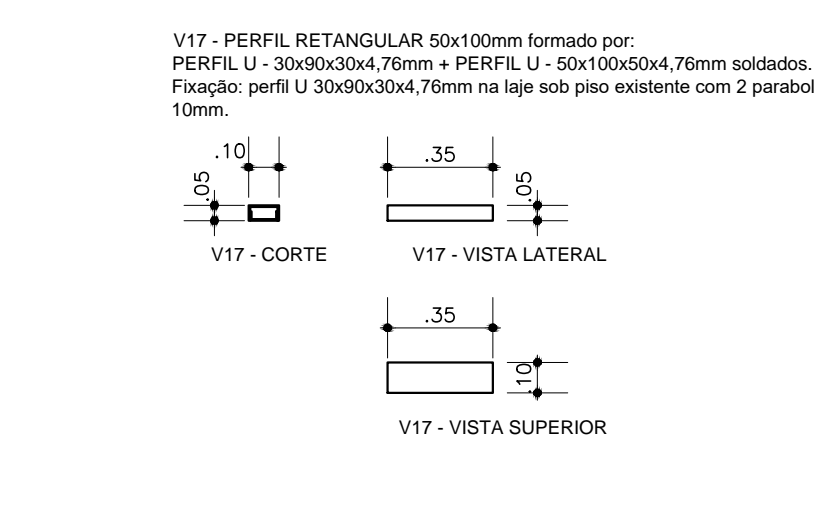
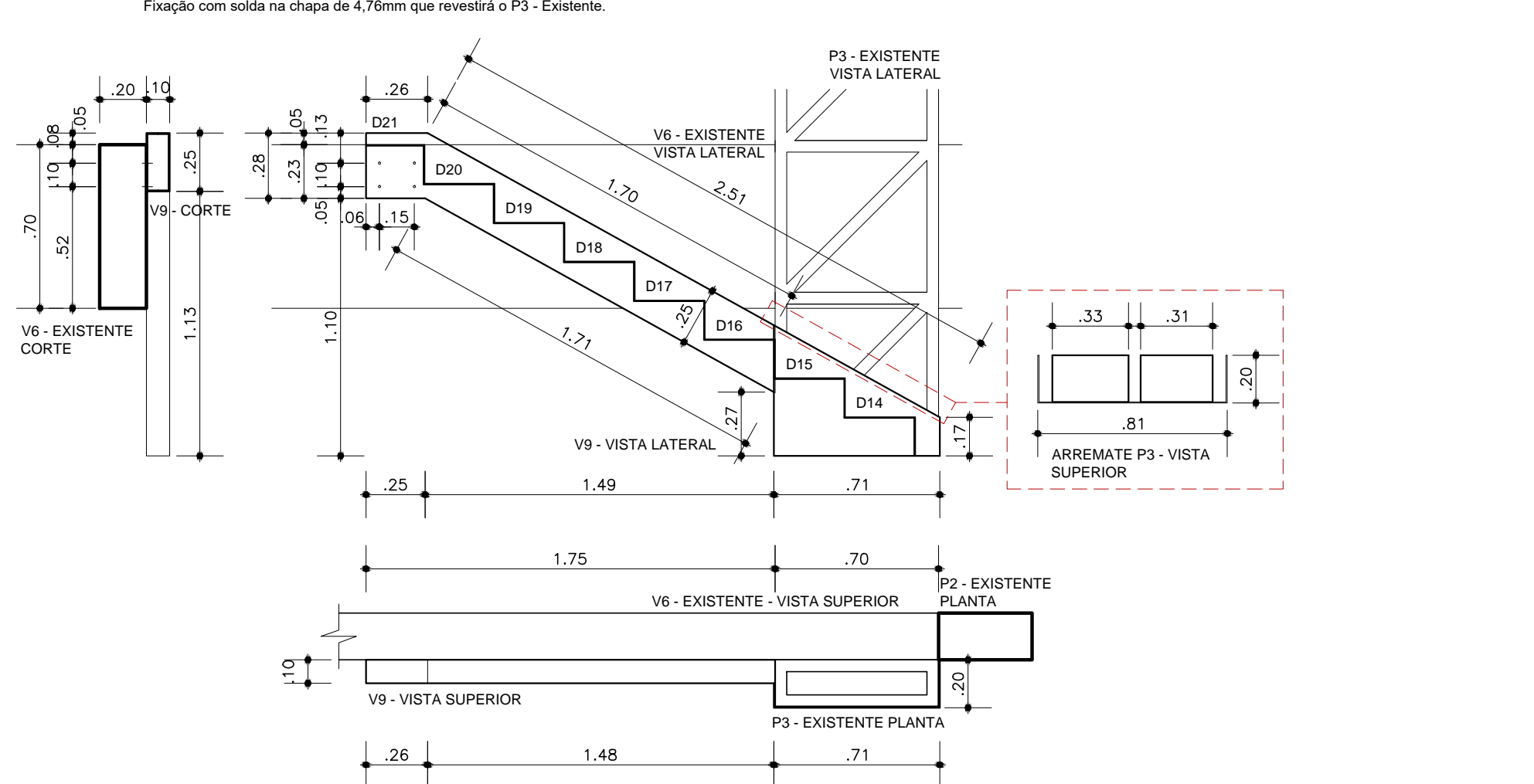
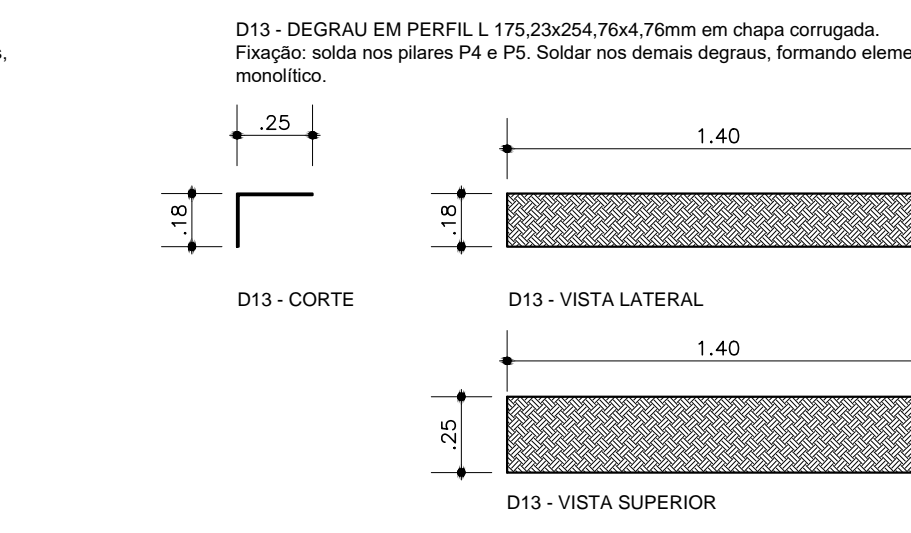
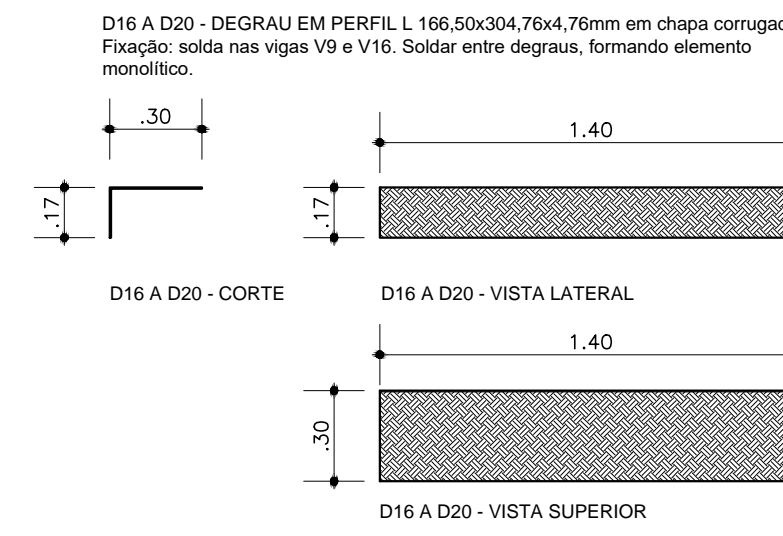
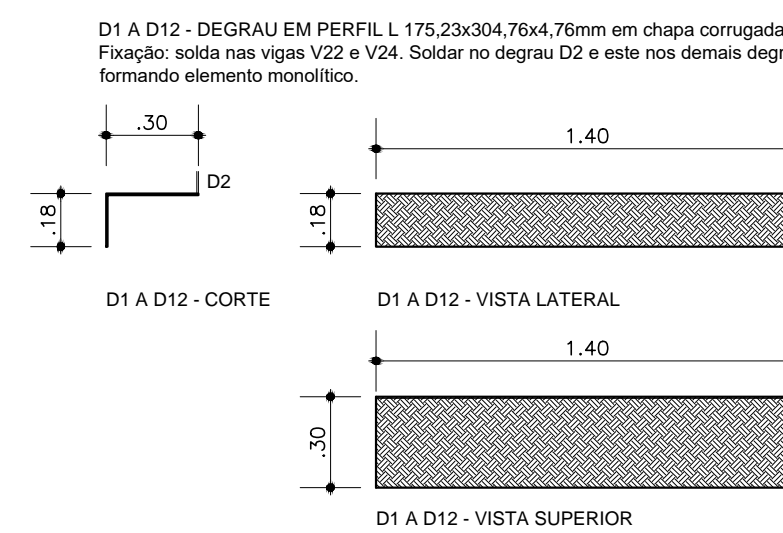
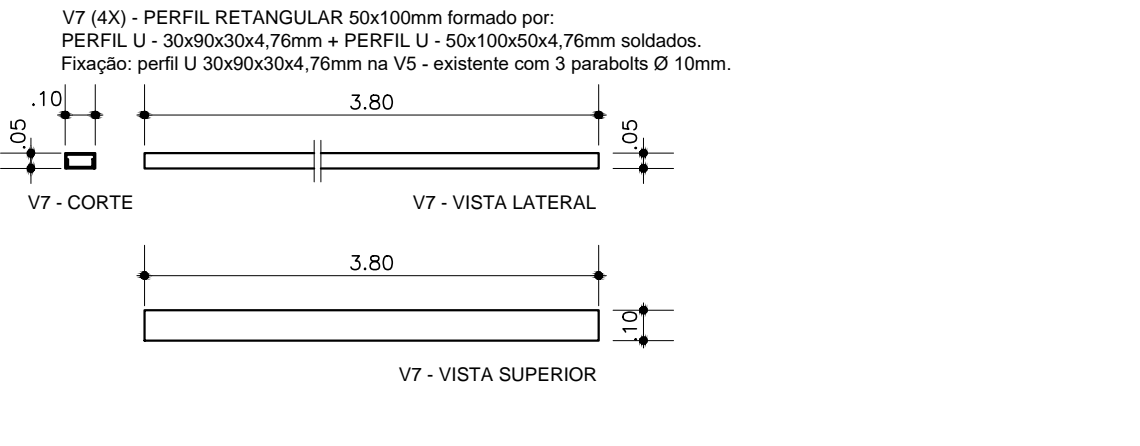
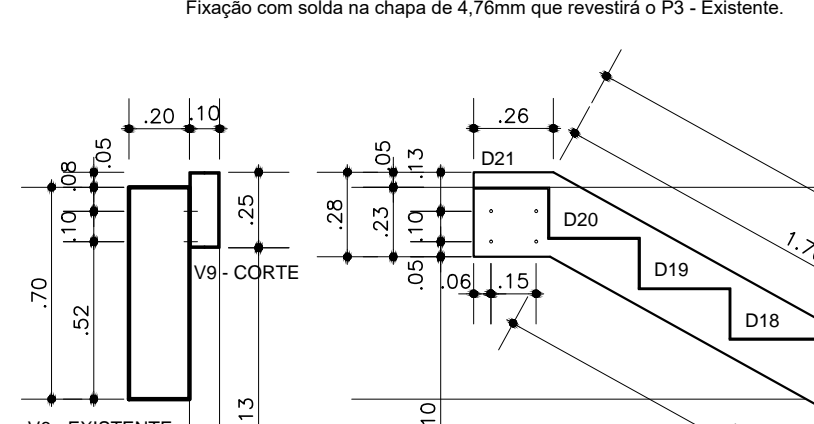
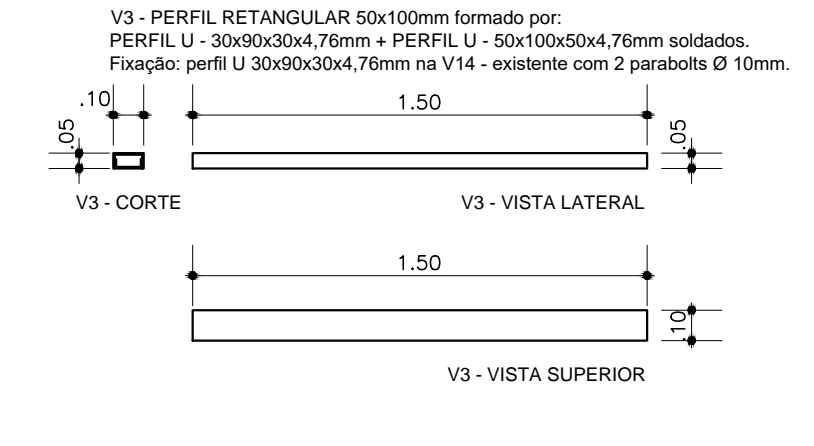
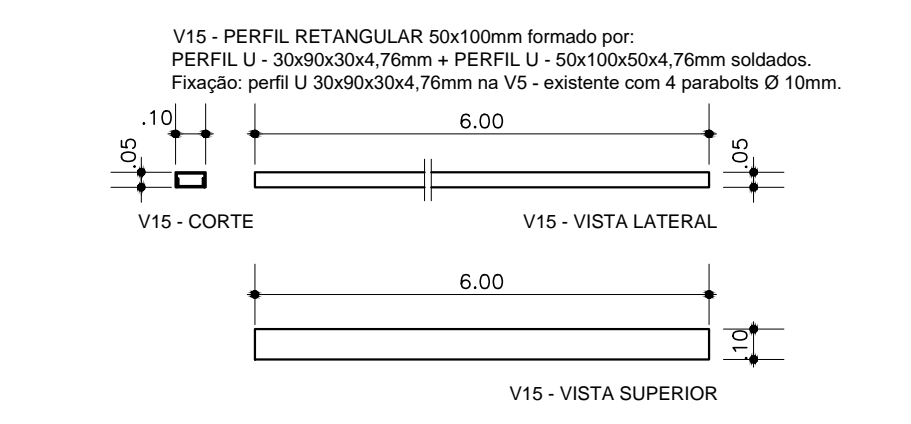
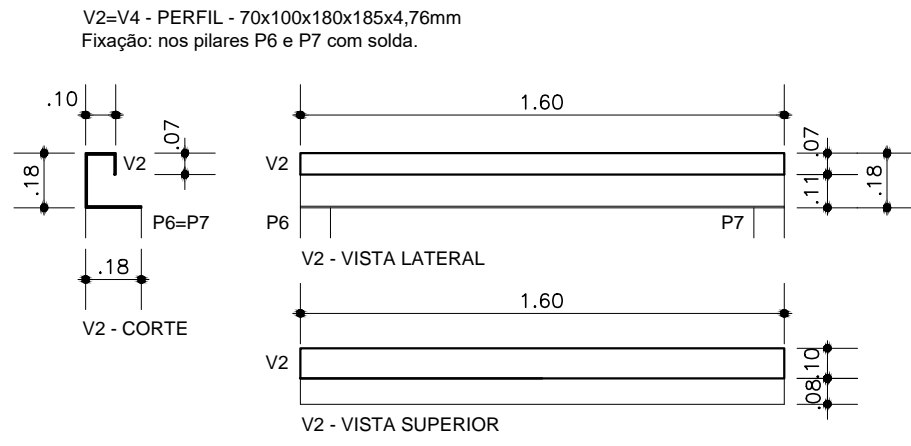
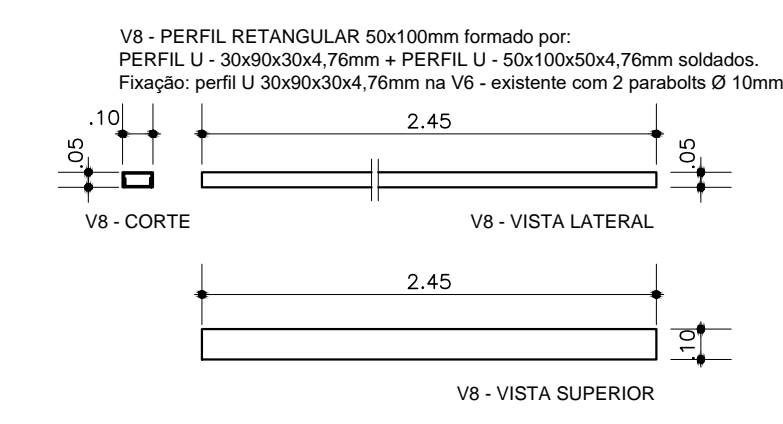
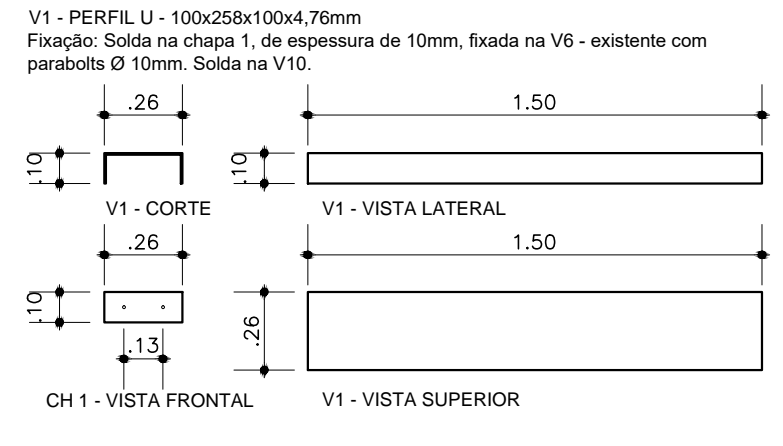
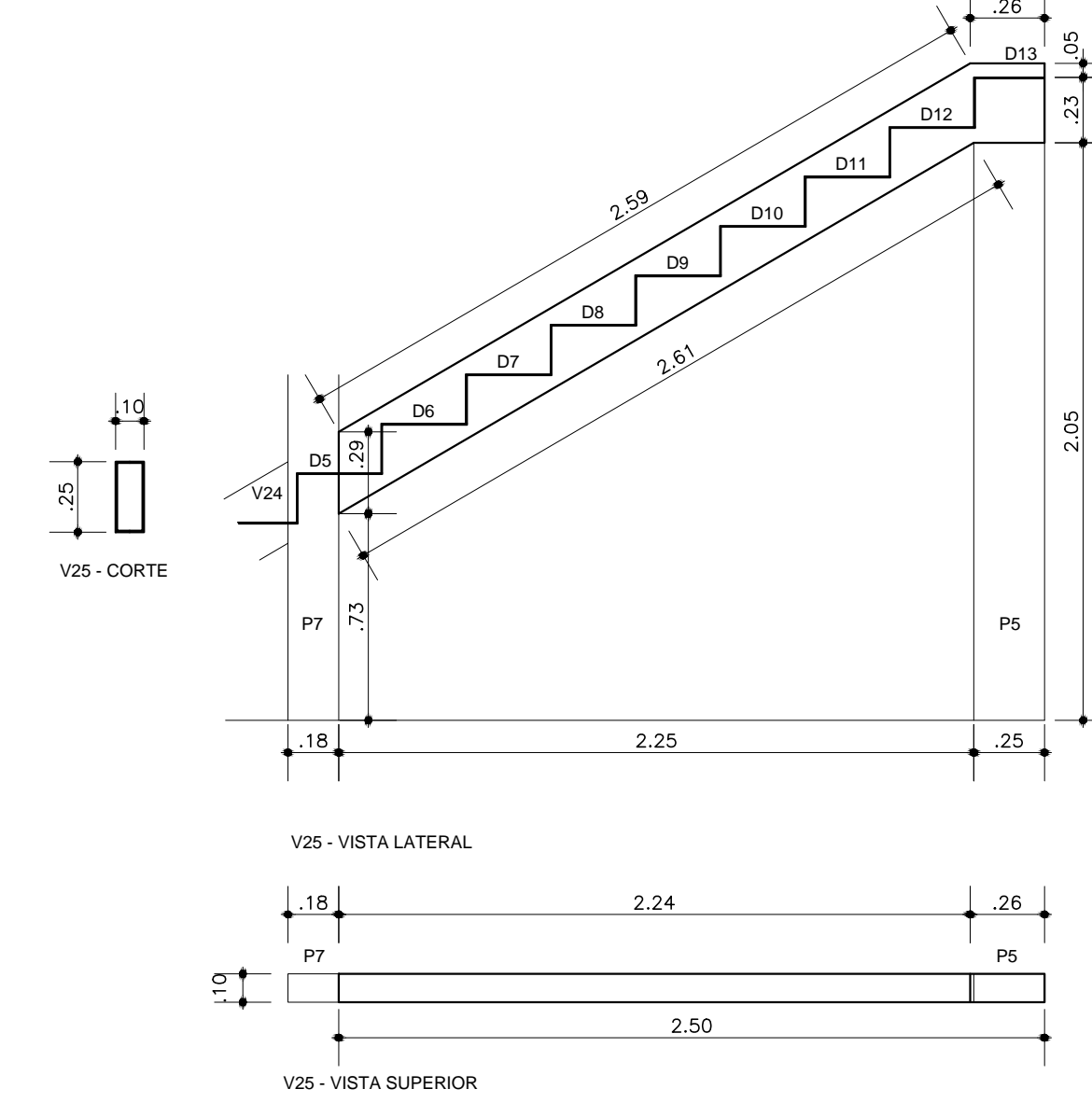
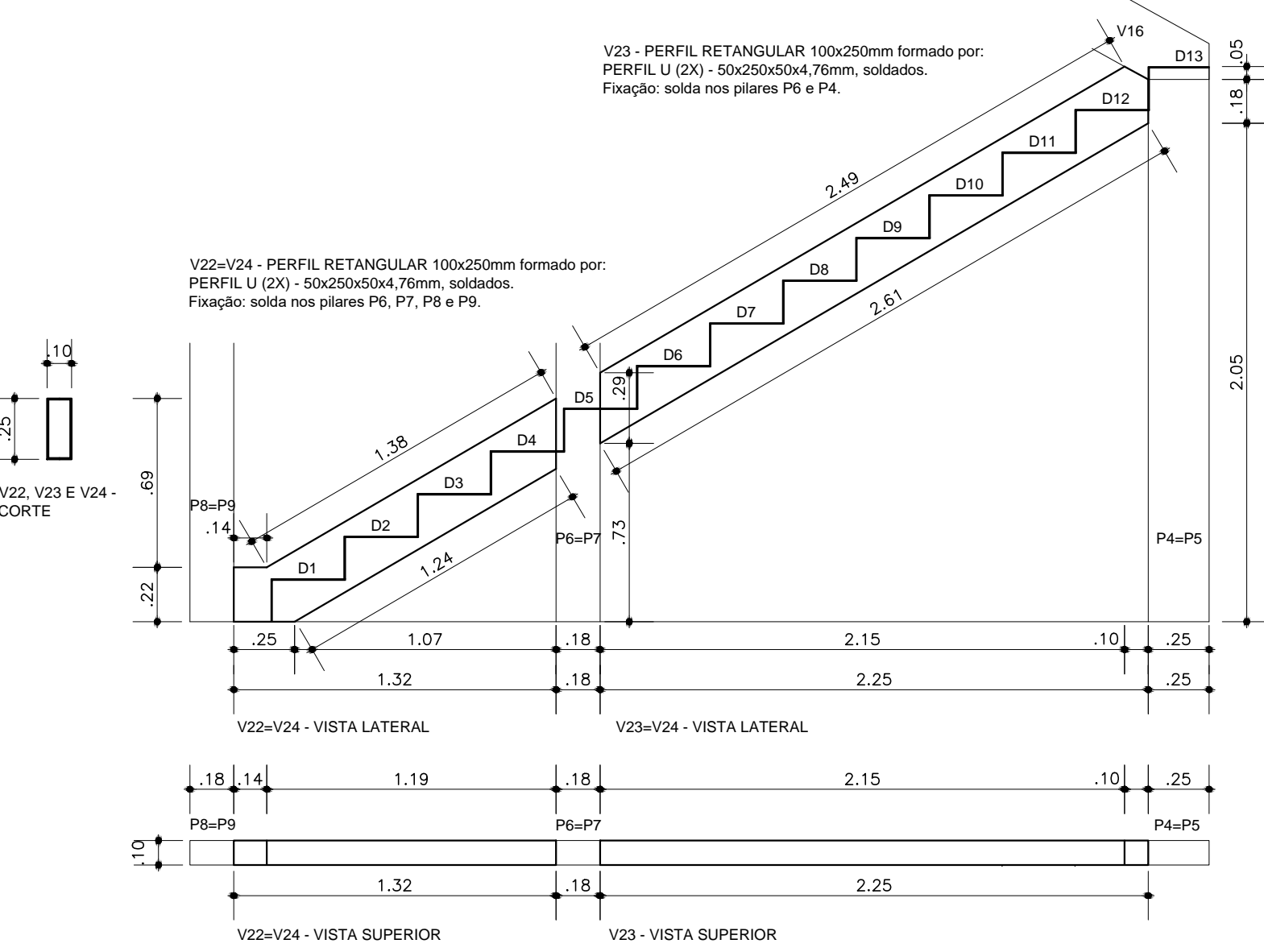
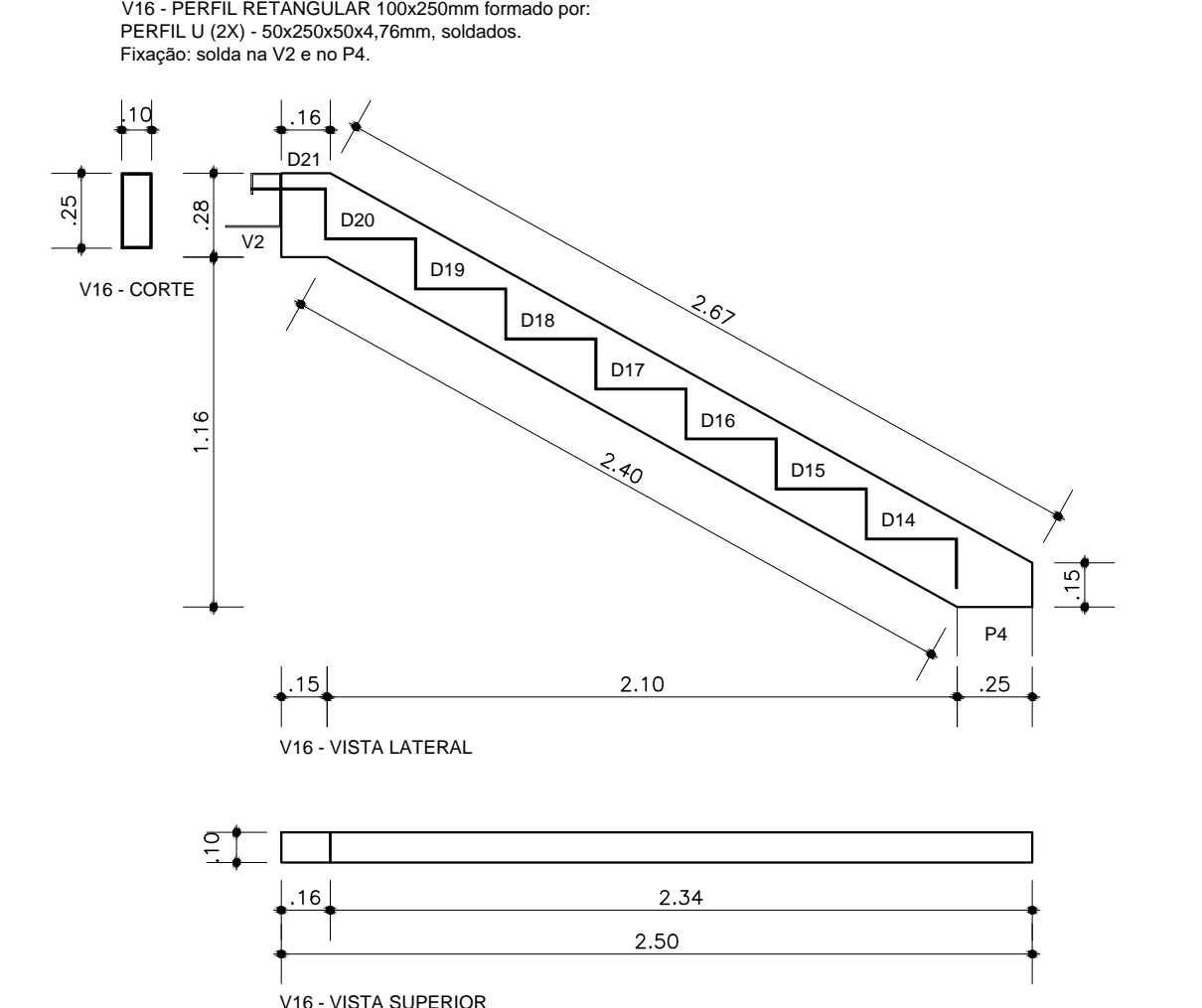
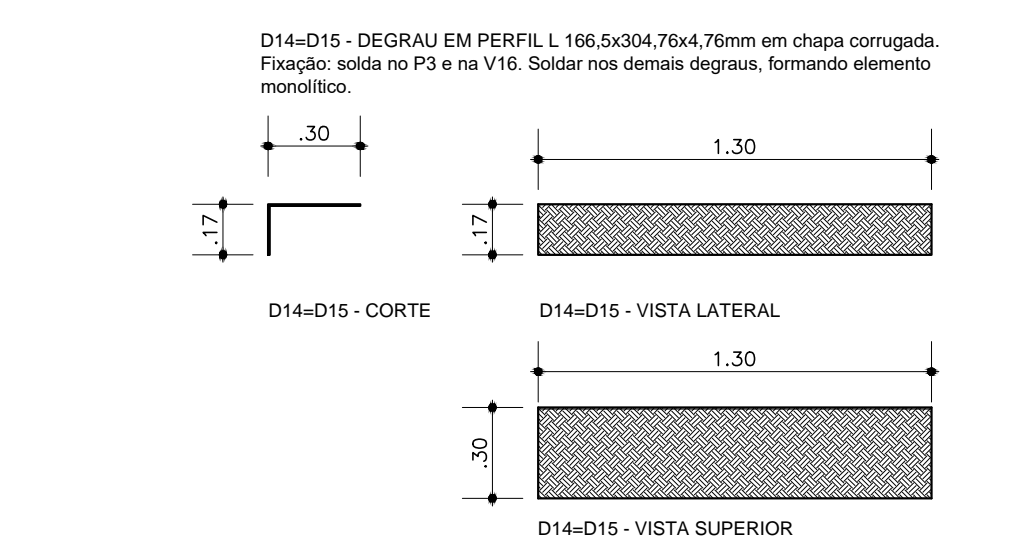
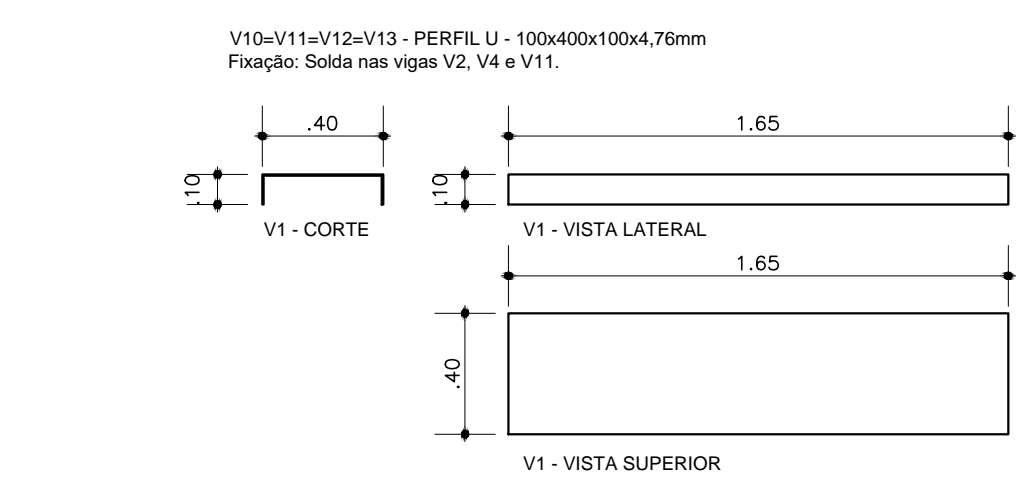


ESCADA 1 - PLANTA BAIXA - NÍVEL SUPERIOR
ESCALA: 1/50



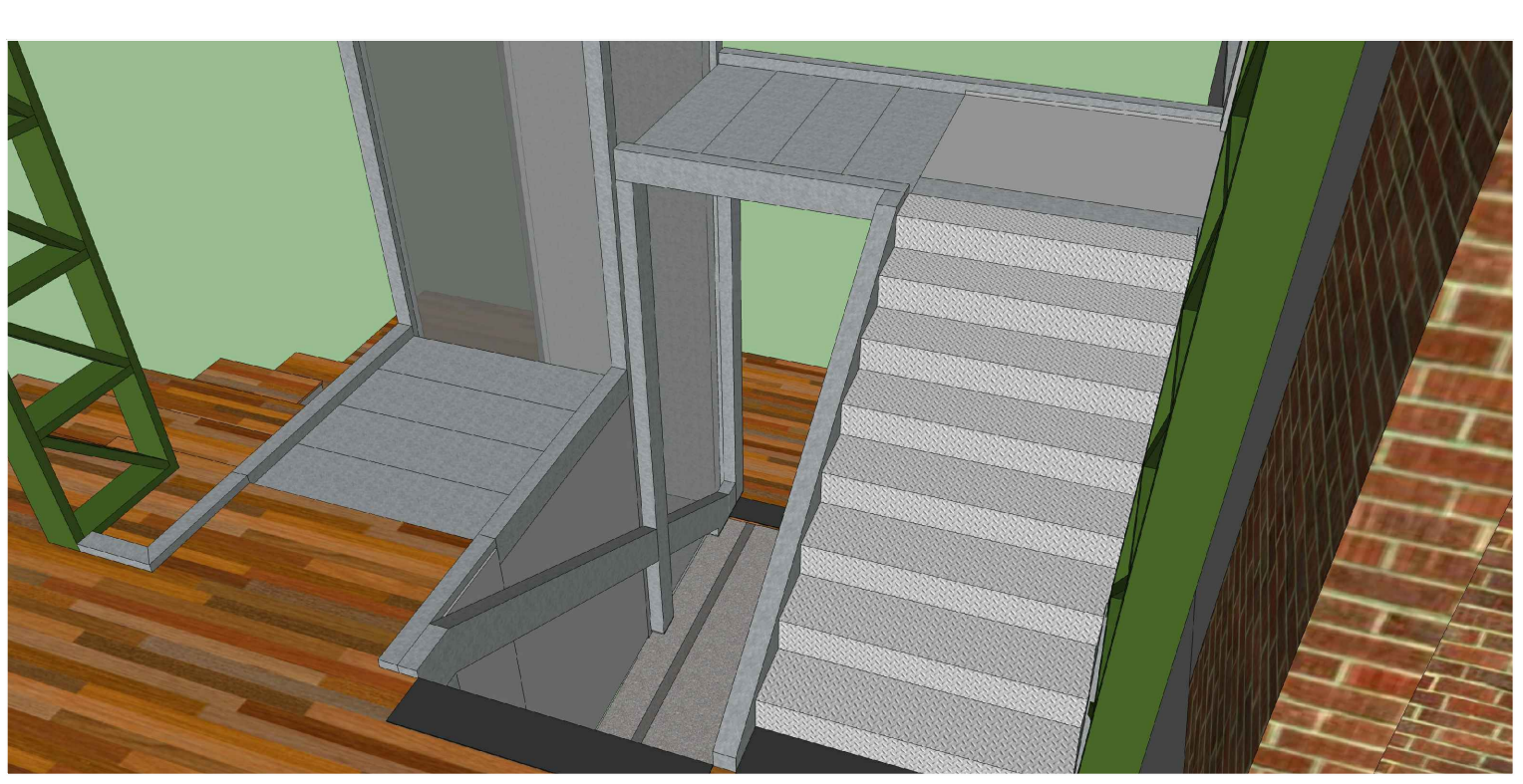
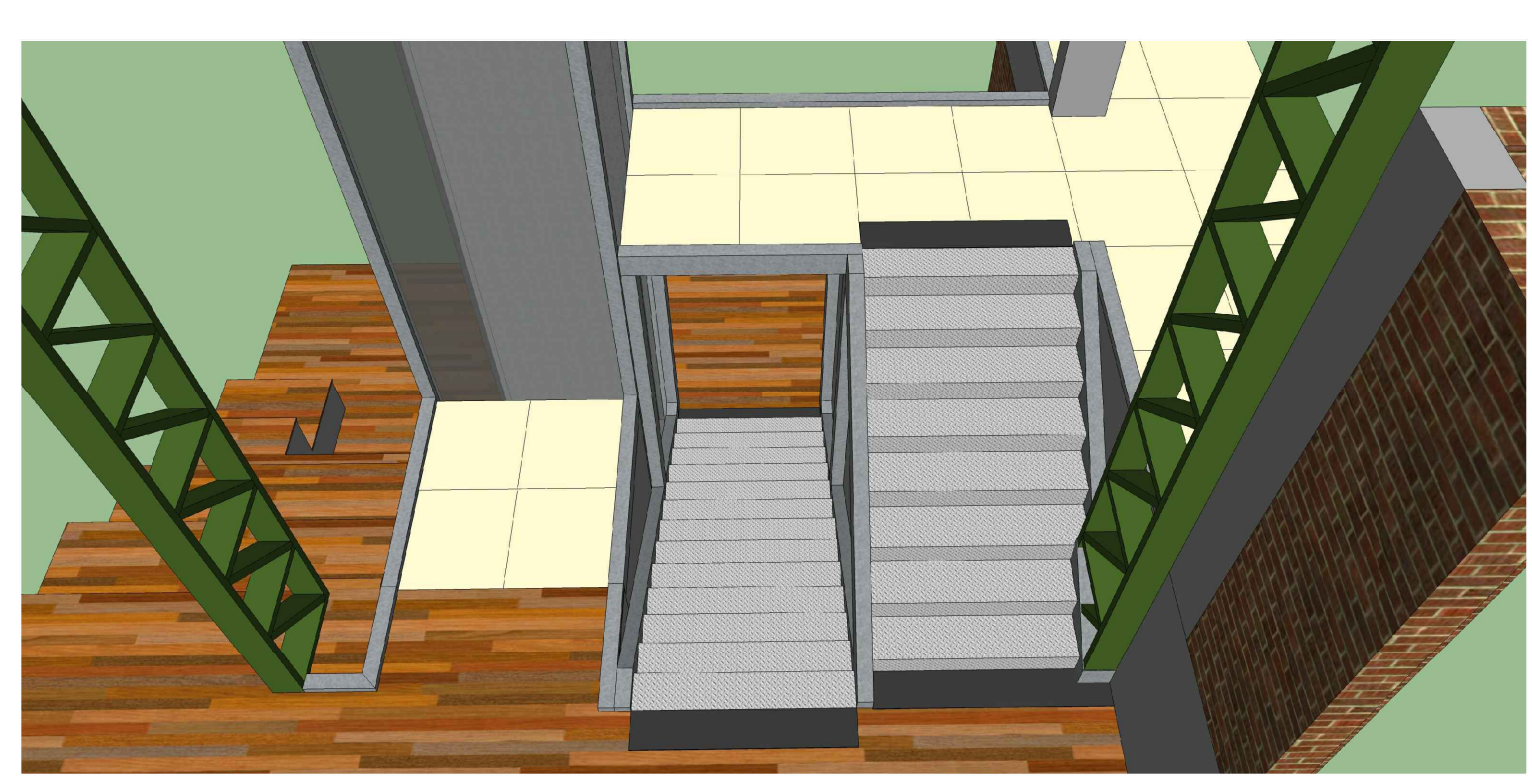
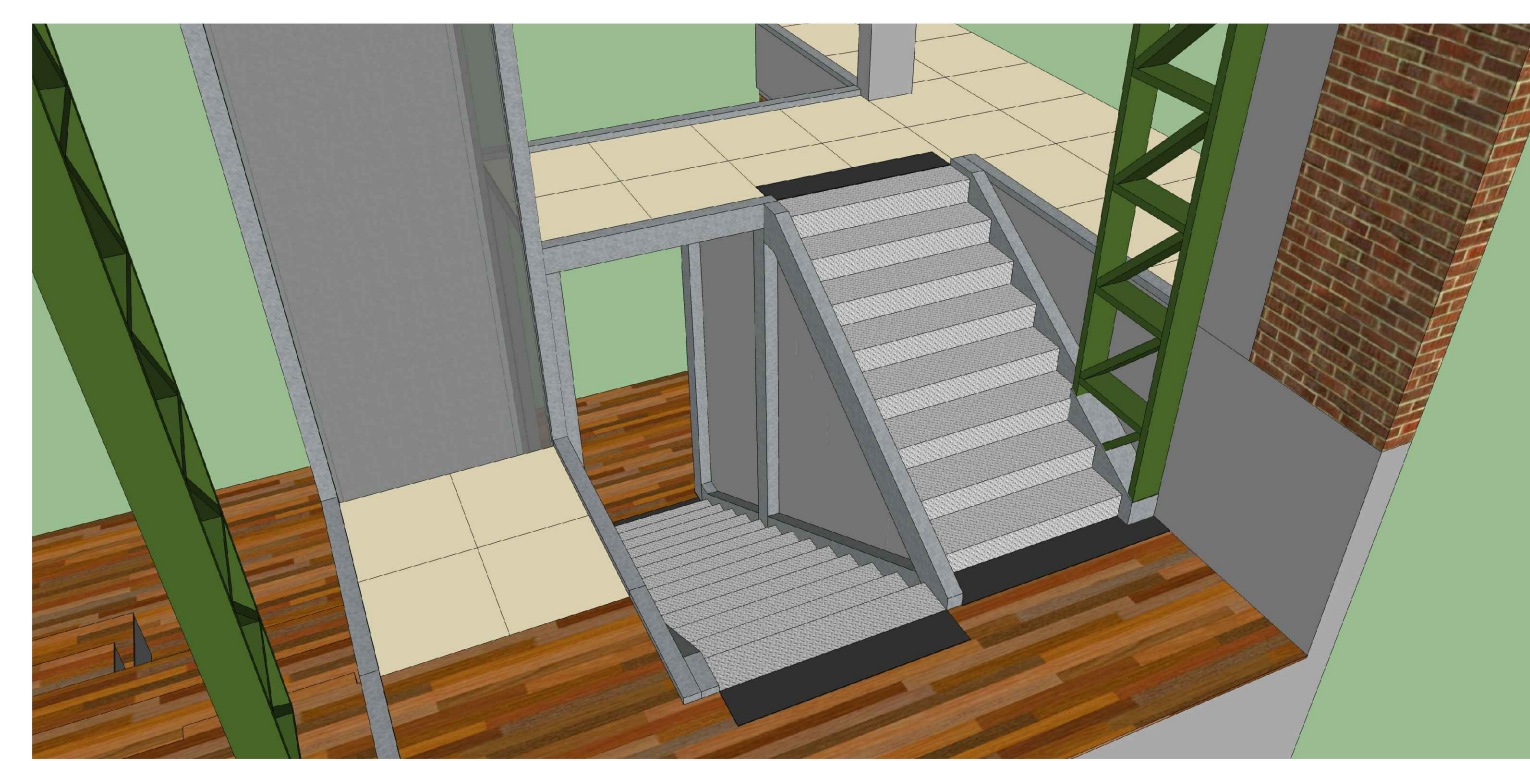
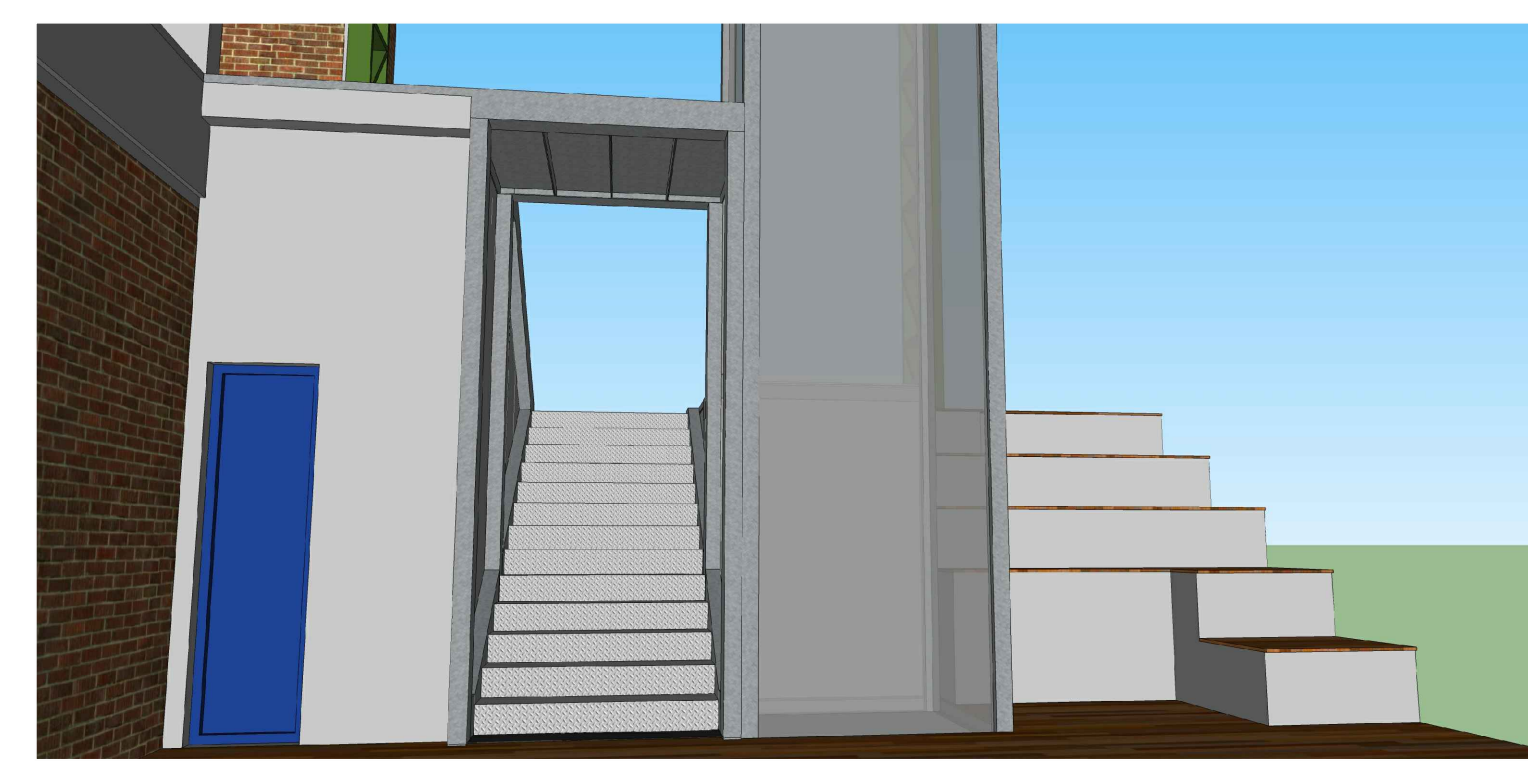
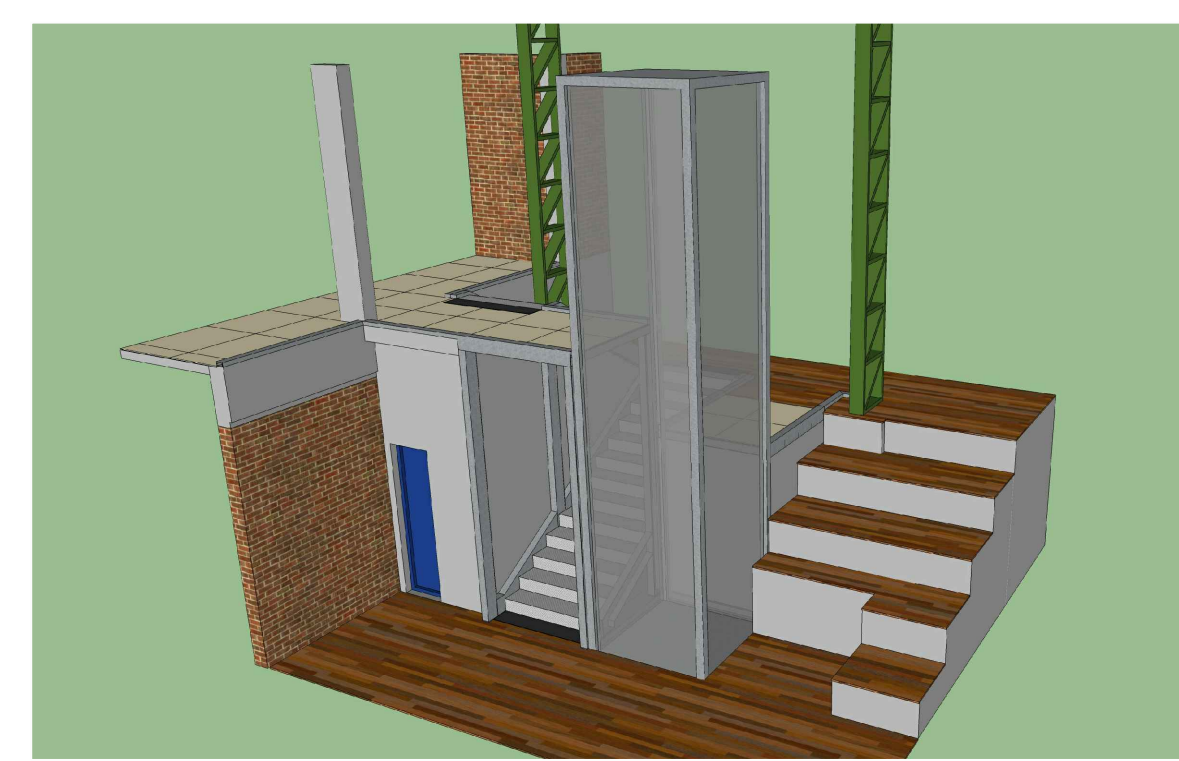
ESCADA 1 - PLANTA BAIXA - NÍVEL INFERIOR
ESCALA: 1/50



PERFIL	COMPRIMENTO (M)	FIXAÇÃO
P4	2.21	Solda em chapa de 10mm fixada em radier com parafusos Ø 10mm.
P5	2.03	
P6	3.53	
P7	3.53	
P8	3.53	
P9	3.53	

DETALHAMENTO DOS PILARES
ESCALA: 1/10

DETALHAMENTO DAS VIGAS E DOS DEGRAUS
ESCALA: 1/25



ESCADA 1 - PERSPECTIVAS SEM ESCALA

INSTITUTO FEDERAL Sul-goandense
Rua Gonçalves Chaves, 2218 - CEP 96115-900 - PELOTAS/RS
Fones: (51) 3026.6209 / 3026.6210 / 3026.6211
E-mail: ifsulgo@ifsulgo.edu.br / ifsulgo@ifsulgo.edu.br

DPO - DIRETORIA DE PROJETOS E OBRAS
R. dos Carreiros, 100 - CEP 96115-900 - PELOTAS/RS
Fones: (51) 3026.6209 / 3026.6210 / 3026.6211
E-mail: ifsulgo@ifsulgo.edu.br / ifsulgo@ifsulgo.edu.br

RESPONSÁVEL TÉCNICO PROJETO: _____
RESPONSÁVEL TÉCNICO EXECUÇÃO: _____
PROPRIETÁRIO: _____

CÂMPUS SÃO LEOPOLDO - REFORMA PARTE I
Avenida São Borja, 1869 - Bairro Rio Branco

PROJETO ESTRUTURAL
ÁREA DA OBRA: 2.734,44 m²

ESTRUTURA METÁLICA - ESCADA 1
OBRA: _____
CLE: 001/2025

DESENHO: CESAR
DATA: JANEIRO/2025
ESCALA: INDICADA
PRANCHA: PES 02